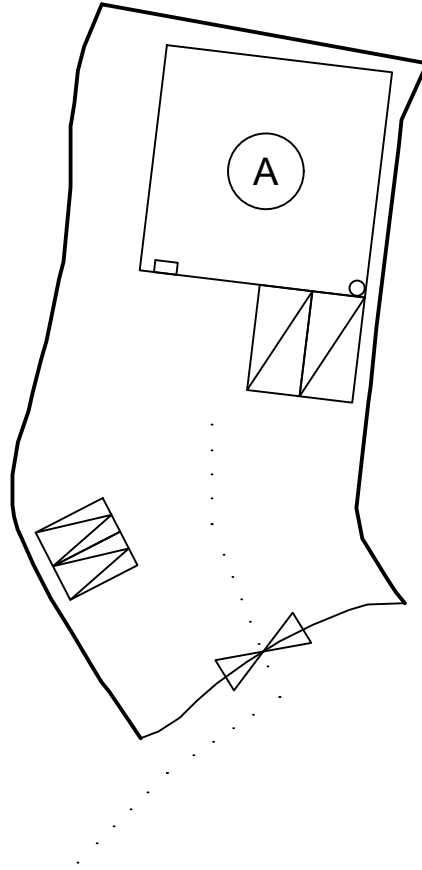


Proposed Structures Details



	Structures	Gross Floor Area (GFA)	Height (Not Exceeding)	Storey
A	Warehouse (Excluding D.G.G.) with Ancillary Office	About 225 m ²	8m	1 only
	Total	<u>About 225 m²</u>		
	Private Car Parking Space	Unit(s): 3		
	LGV L/UL Space	Unit(s): 2		



*All FSI (includes installation/maintenance/modification/repair work) will be completed by RFSIC.
For Emergency Vehicular Access, Please see Appendix 6.1

*All the enclosed structures are provided with access for emergency vehicles to reach within 30m travel distance from the structures.

Legend:

- 5 kg Portable Carbon Dioxide Type Fire Extinguisher (1 in Total)
- Emergency Lighting (BS 5266-1:2016, BS EN 1838:2013 and the FSD Circular Letter No. 4/2021) (1 in Total)
- Emergency Vehicular Access (A) Warehouse with Ancillary Office
- ▨ Private Car Parking Space
- ▨ LGV L/UL Space

Appendix 6

Location: DD 109 Lot 1142

App. No.: A/YL-KTN/999

OZP: S/YL-KTN/11

District: Kam Tin North

Zoning: Agriculture

Date: 11 September 2024

Proposed Fire Service Installation Plan

擬議消防設備安裝計劃圖

擬議臨時貨倉 (危險品倉庫除外)
連附屬設施(為期3年)及填土工程

Proposed Temporary Warehouse (excluding
Dangerous Goods Godown) with Ancillary
Facilities

for a Period of 3 Years and Filling of Land

SCALE

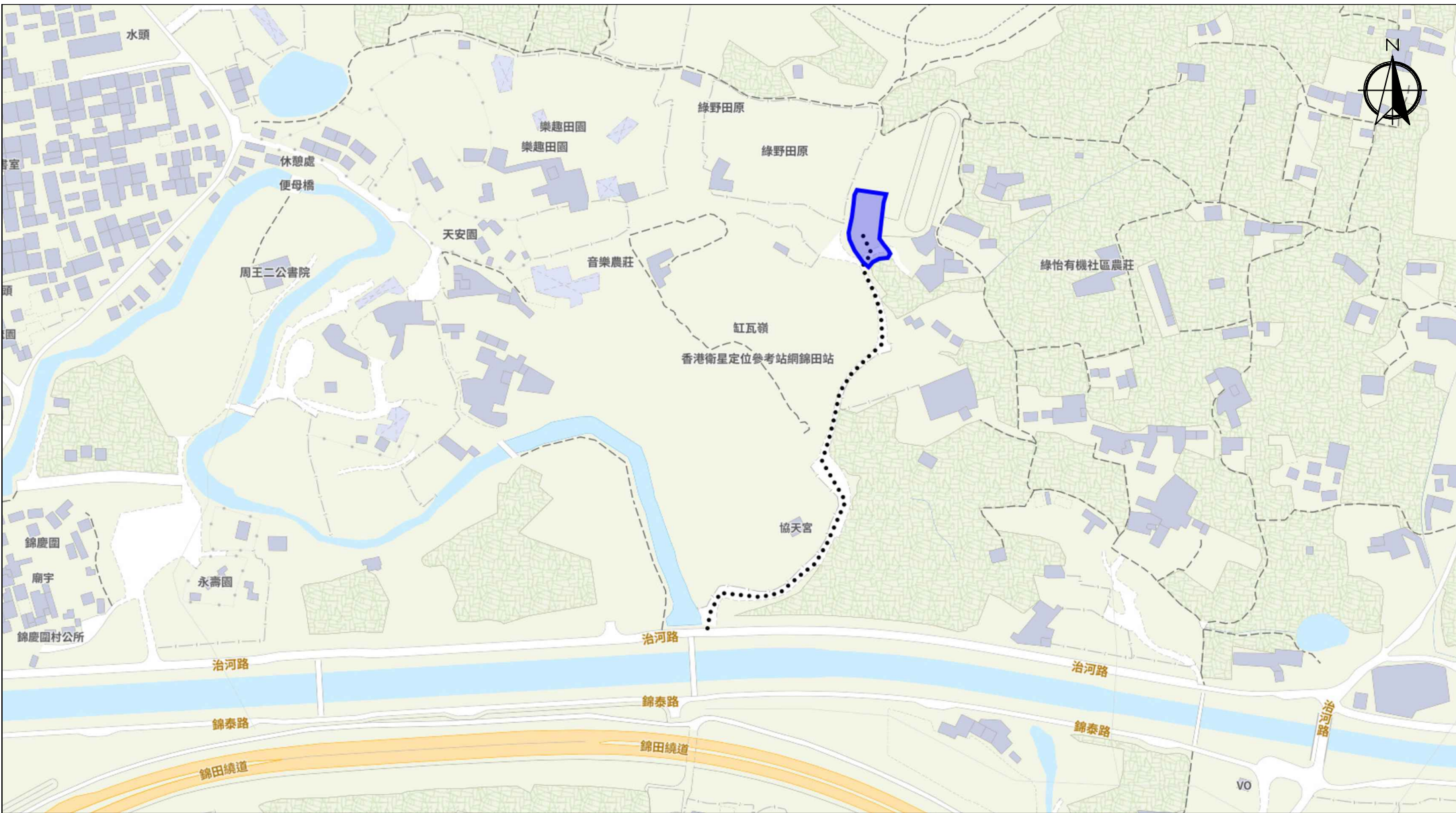
1:500

@A4

For Identification Only

Drawing No.:

6-01



Scale: Undefined @A4

Captured from map.gov.hk on 2nd May 2024

<p>Appendix 6 Emergency Vehicular Access</p>	<p>Location: D.D. 109 Lot 1142 OZP: S/YL-KTN/11 District: Kam Tin North Zoning: Agriculture</p>	<p>Project: Proposed Temporary Warehouse (excluding Dangerous Goods Godown) with Ancillary Facilities for a Period of 3 Years and Filling of Land</p>	<p>Width of Chi Ho Road: 6m (About)</p> <p>Map Legend: ●●●● Road Path — Site Boundary</p>	<p>Drawing No.: 6.1-1</p> <p>For Identification Only</p> <p>Date: 02/05/2024</p>
---	---	--	---	---